

## 6x12

The 6x12 is a traditional rectilinear stone with a larger scale. It has the traditional flat top with chamfered edges. The 6x12 can be installed by itself and also used in ashlar layouts with 6x6 and 12x12 pavers.

### Stocked Colors:

See page 2 for color swatches and list of stocked colors.

*\*Available in standard and tumbled textures.*



*Shown: 6 x 12 Moss and Sand-Stone blend.*



**6x12 (60mm)**  
5.90" x 11.81"



**6x12 (80mm)**  
5.90" x 11.81"  
special order

<b>6x12</b>	<b>60 mm</b>
Size (in inches)	5.90 x 11.81
Sq Ft per Stone	.48
Stones per Sq Ft	2.08
Sq Ft per Pallet	115
Stones per Pallet	240
Weight per Stone	13.66 lbs
Weight per Pallet	3278 lbs

<b>6x12</b>	<b>80 mm</b>
Sq Ft per Pallet	93
Stones per Pallet	192
Weight per Stone	18.21 lbs
Weight per Pallet	3497 lbs

*80 mm 6 x 12 available as a special order*

For custom color options  
contact your Angelus Sales  
Representative at:

**(951) 328-9115** or  
**(805) 485-1137**

For more information on  
Related Pavers & Walls  
Products visit:  
[AngelusPavingstones.com](http://AngelusPavingstones.com)



Joint Sand Bullnose Coping

**NOTE: ALWAYS VIEW PRODUCT SAMPLES PRIOR TO INSTALLATION** The color and texture of Angelus products are not specific to any product or groups of products. Variation in color, shades of color, texture, and aggregate exposure is inherent in all concrete products and exact matches cannot be guaranteed. Not all products are stocked in all colors. Charts with more product related color availability are shown from product pages. Colors and textures represented in print and online are as close as possible to the actual product. Photographic techniques, printing techniques and viewing monitors – as well as actual viewing conditions – can alter perception of color.

**6x12**

Blended Colors (swatches shown in Antique Cobble I)



**CREAM - BROWN - CHARCOAL**



**CREAM - TERRACOTTA - BROWN**



**GRAY - CHARCOAL**



**GRAY - MOSS - CHARCOAL**



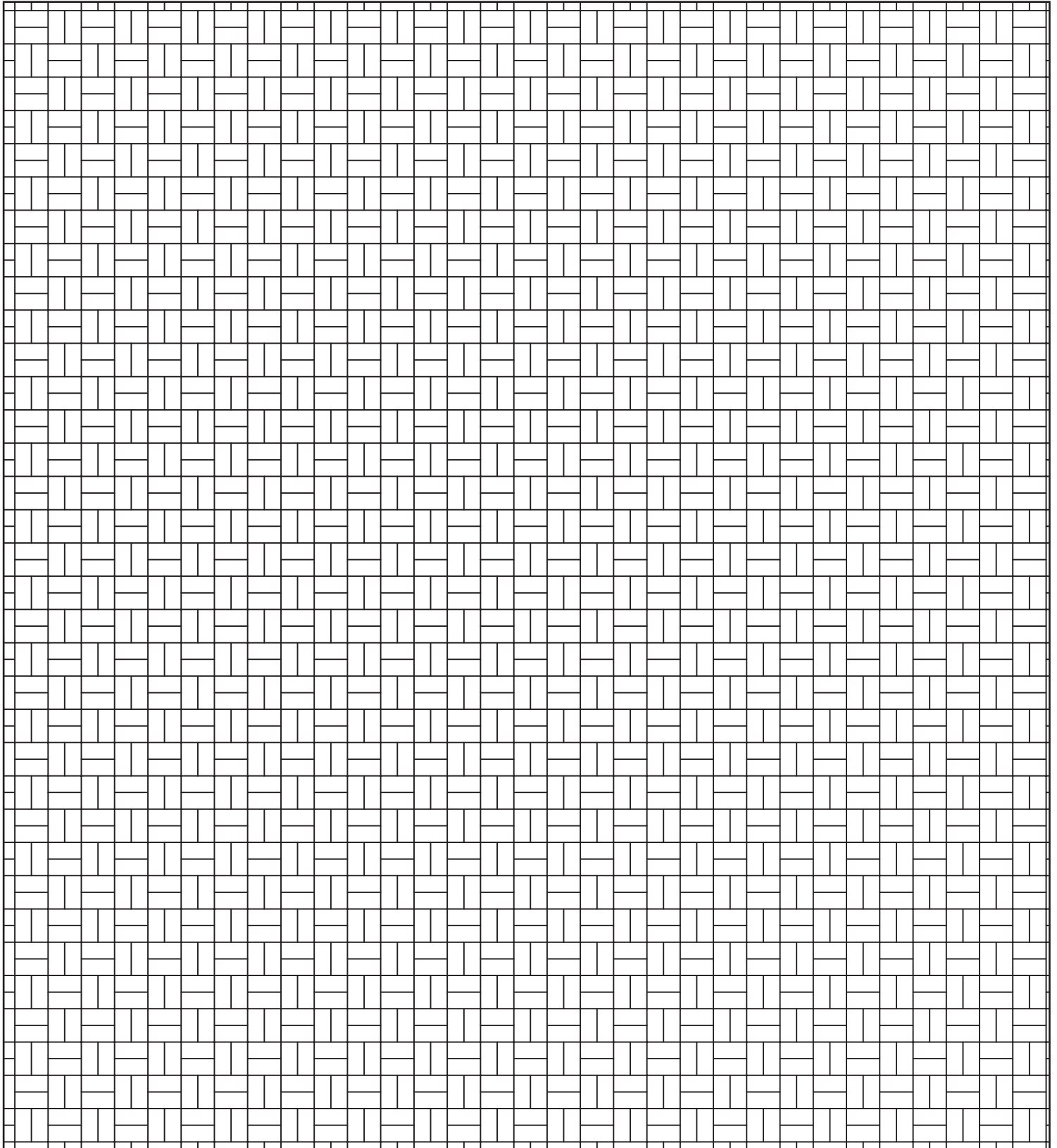
**SAND - STONE - MOCHA**



**TUSCAN**



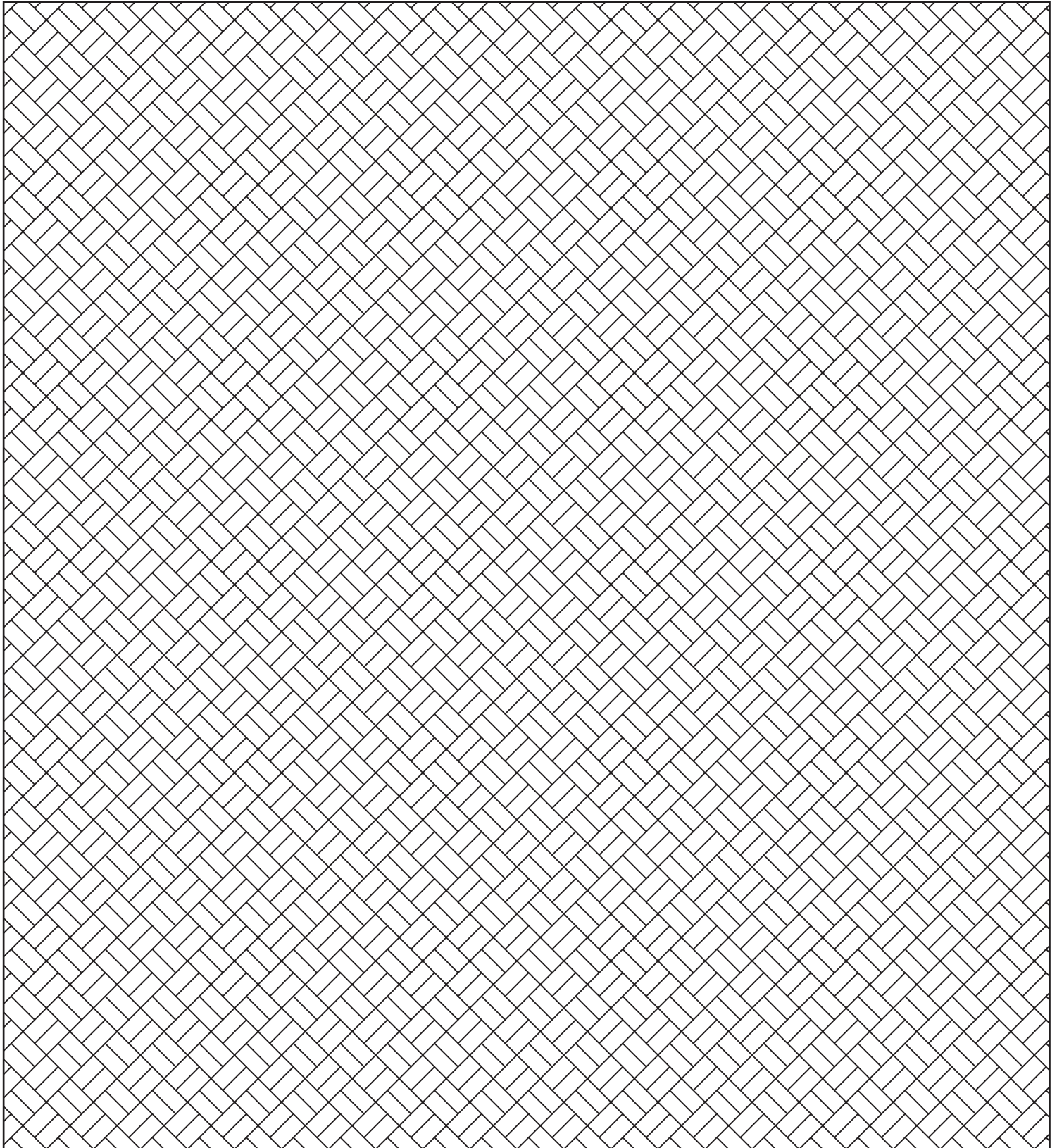
**AVAILABLE WITH  
RECYCLED CONTENT**



Example Layout

6x12 Basketweave 45°

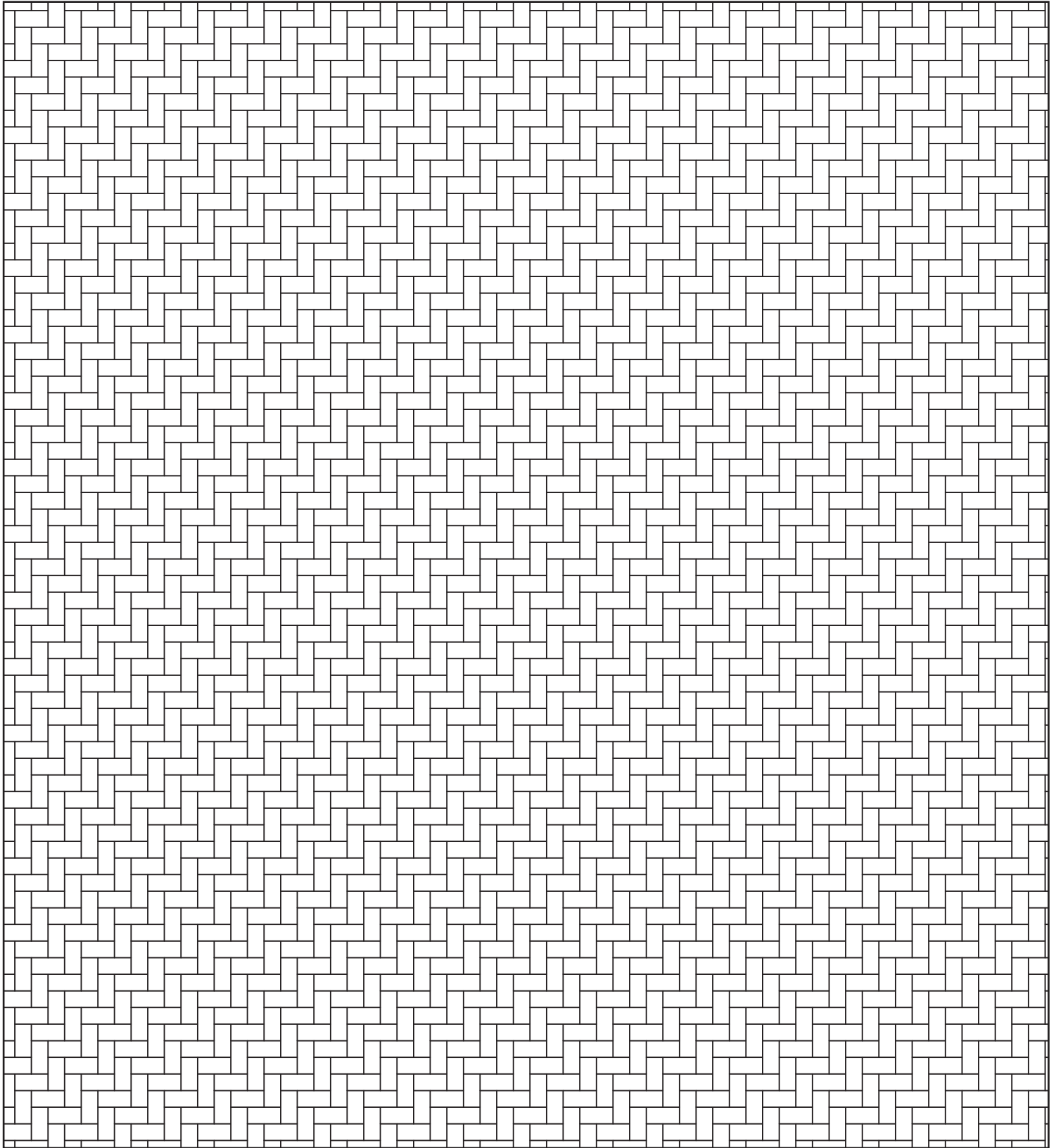
100% 6x12



Example Layout

6x12 Herringbone

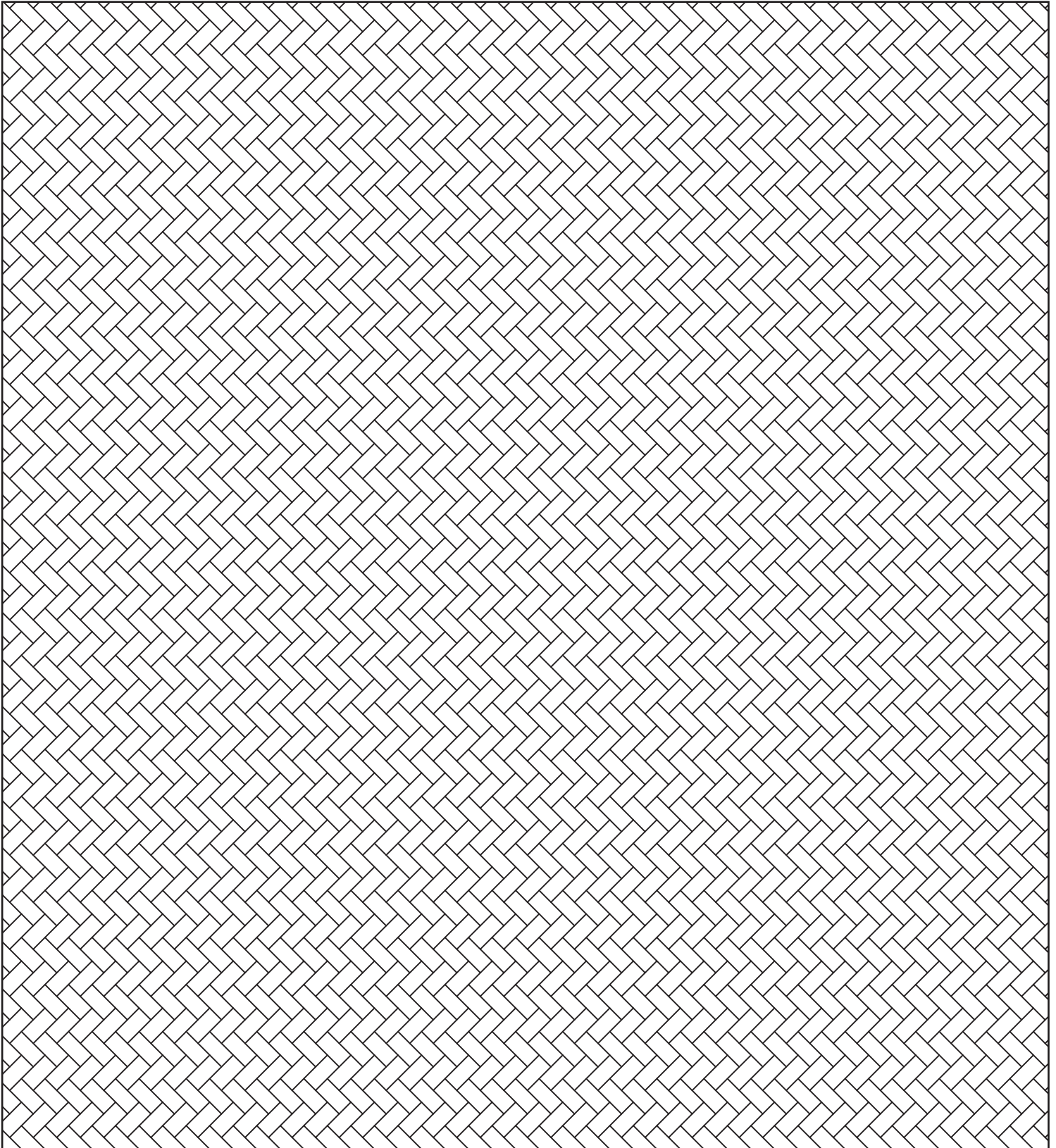
100% 6x12



Example Layout

6x12 Herringbone 45°

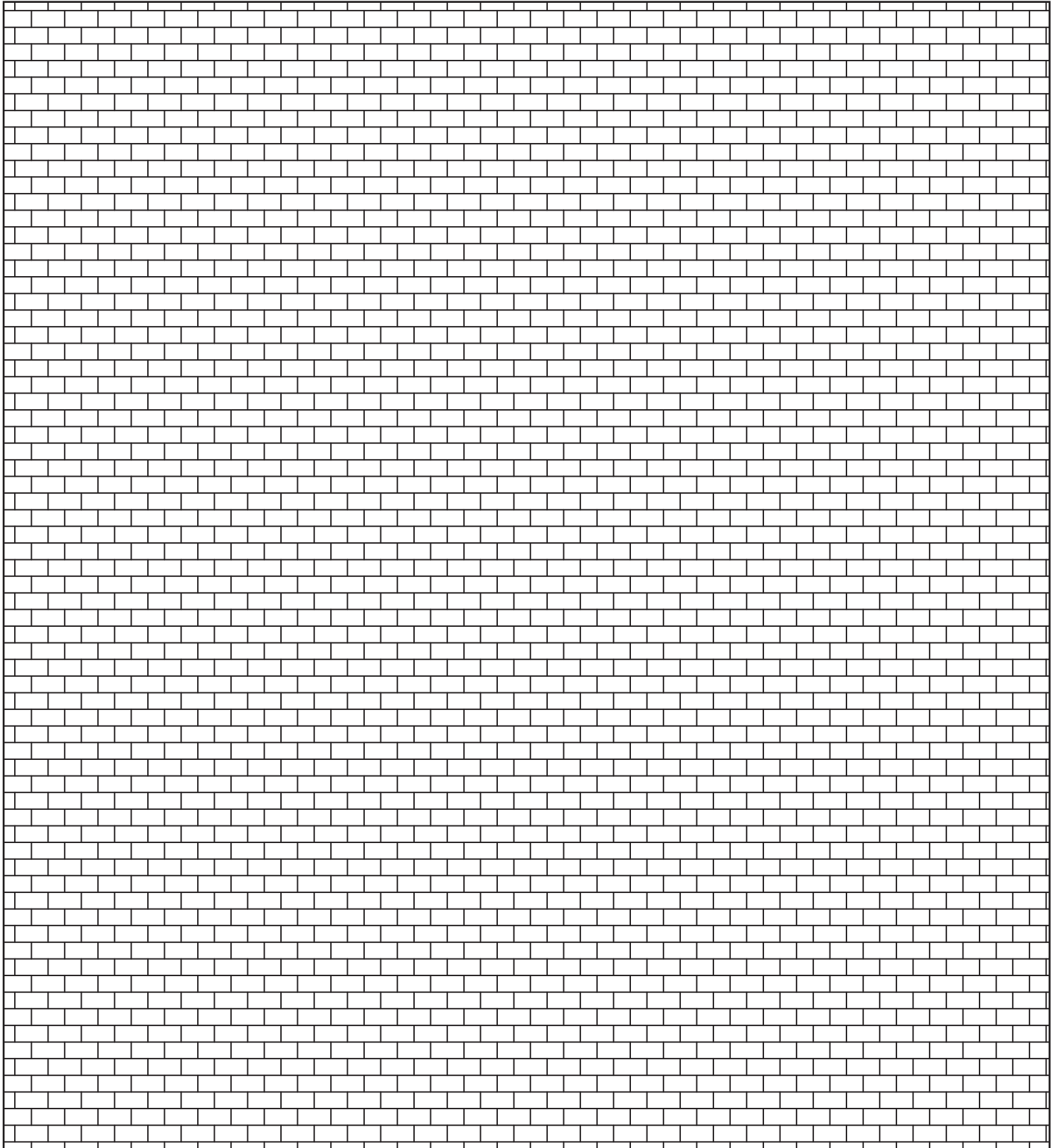
100% 6x12



Example Layout

6x12 Runner

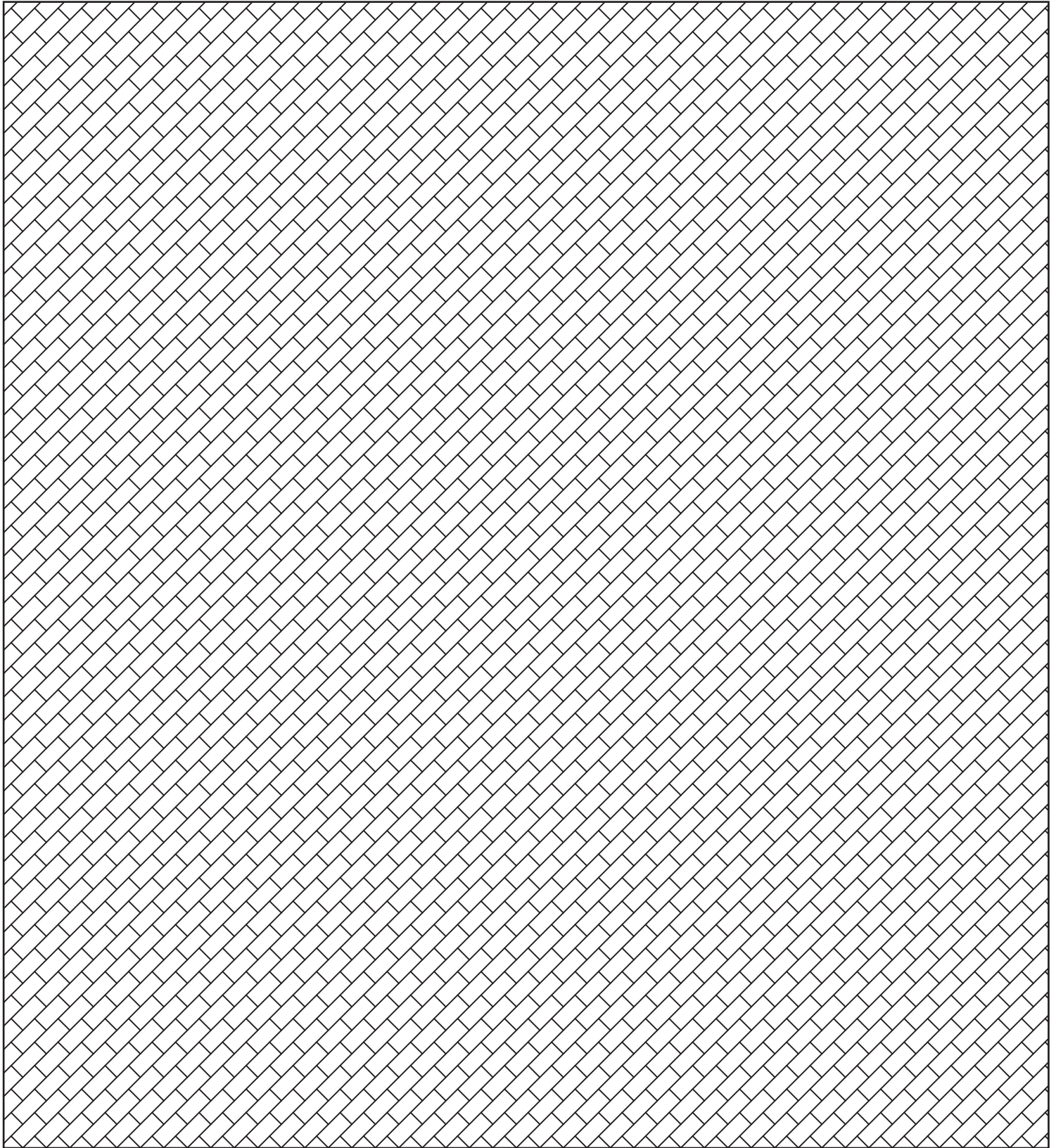
100% 6x12



Example Layout

6x12 Runner 45°

100% 6x12





Example Layout

Ashlar

% Varies 6x6, 6x12, and 12x12

